

**MSTAR**  
**TRAINING SUPPORT PLATFORM™ (TSP)**

M-Star Training Support Platform™ (TSP) is MGRM’s highly-intuitive training platform that supports the entire training spectrum; including traditional face-to-face instruction, all models of blended learning and delivery of fully virtual online courses.

M-Star TSP is an integrated solution that supports each stakeholder in the online training community by bringing both instructors and trainees together on a cohesive platform, providing user-friendly tools and resources, putting analytics at the fingertips of instructors and administrators, and making proactive engagements with trainees a simple matter.

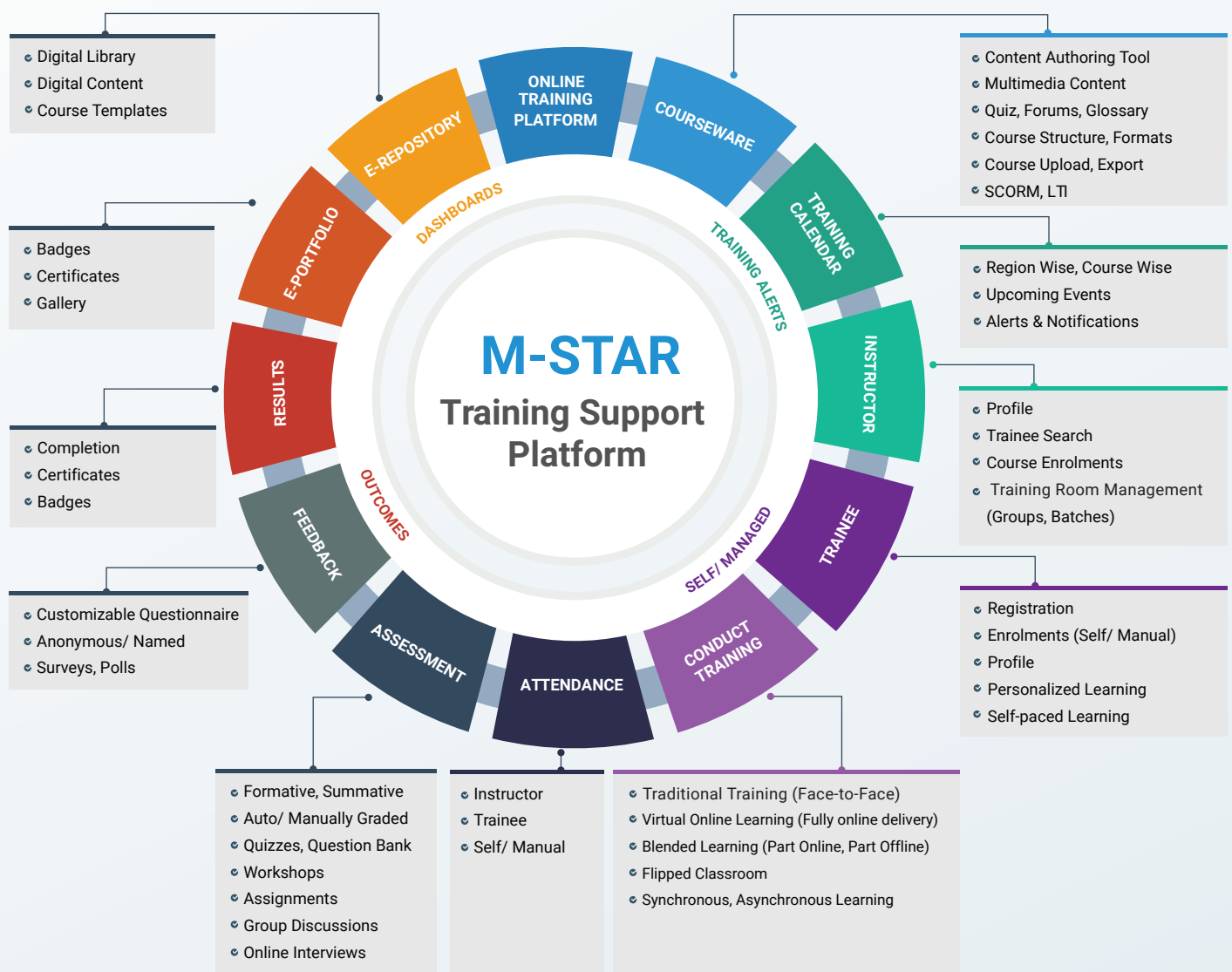
M	MANAGING	S	SCHEDULING	T	TRACKING	A	ANALYZING	R	REPORTING
People		Tasks		Processes		Outcomes		Real time & Dynamic	
Data & Information		Resources		Workflows		Data		Statutory	



# With M-Star TSP, Organizations can

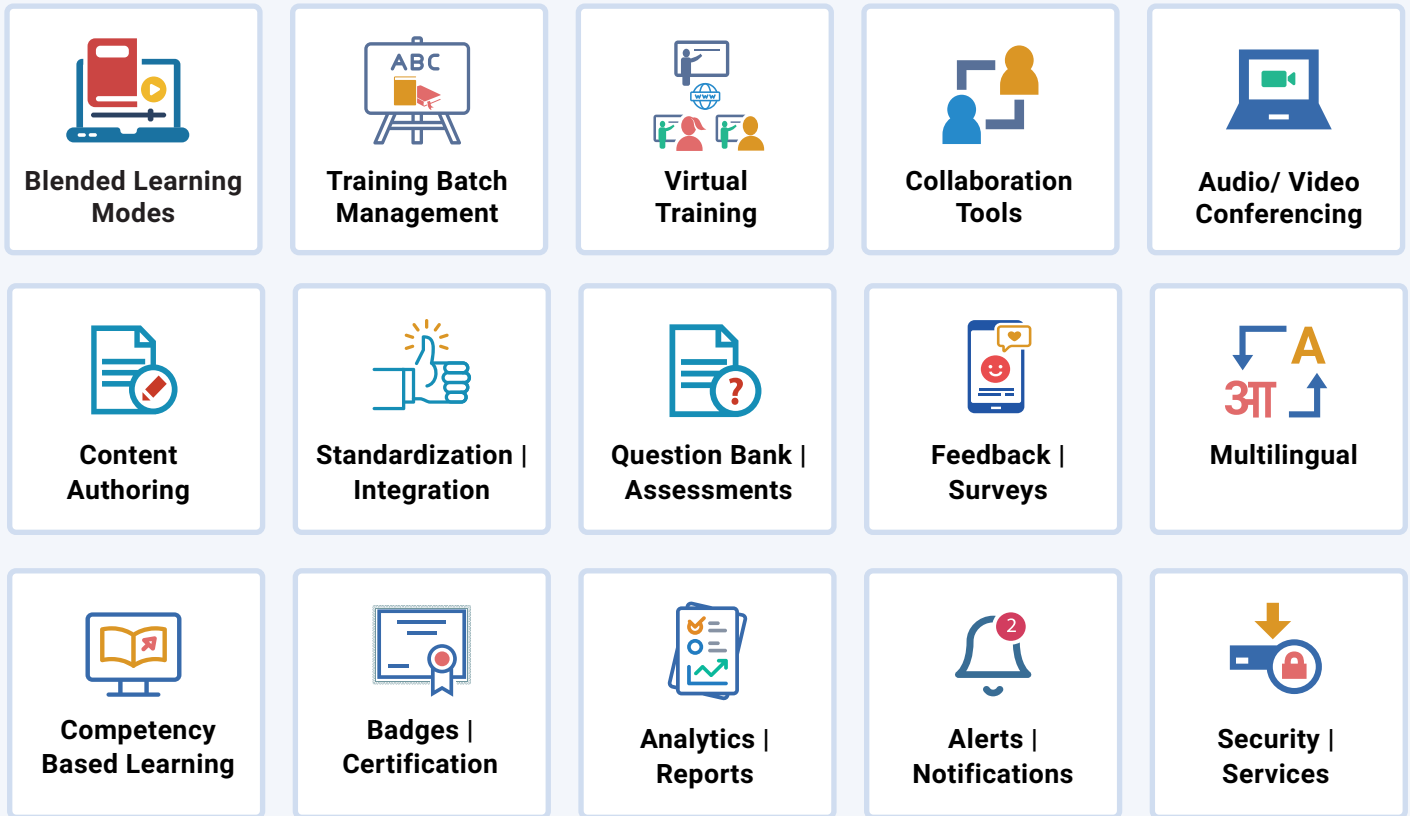
- Expand training opportunities within and beyond the training room boundaries.
- Empower trainers to flip classes and seek deeper understanding with technology.
- Provide quality instruction with goal oriented curriculum and assessments.
- Provide digital resources for trainers and trainees to accomplish training objectives.
- Provide a balanced approach to content knowledge and competency-based learning.
- Support evidence-based performance through assessments.
- Present dynamic analytics on trainee behavior, progress, and performance.

## M-Star Training Support Platform Ecosystem



VIRTUAL TRAINING		COLLABORATION	BENEFITS
✓ Audio, Video Conference	✓ Screen Sharing	✓ Forums, Discussions, Blogs	✓ Adaptive Learning
✓ Sharing of files, notes	✓ Multiple Rooms	✓ Chat, Messages	✓ Competency Based Learning
✓ Whiteboard & Annotations	✓ Recording & Playback in Course	✓ Emails, Notifications	✓ Anytime, Anywhere Learning
✓ Public, Private chat	✓ Monitoring & Control	✓ Surveys, Polls	✓ Inbuilt Analytics
✓ Real-time Polls	✓ One-to-one, One-to-many	✓ Glossary, Wiki	✓ One Stop Shop

# M-Star TSP: Integrated Platform



## M-Star TSP is Open and Flexible

- ✓ Integrates curriculum from various content providers
- ✓ API based integration with other applications
- ✓ SCORM and IMS compliant
- ✓ Follows Web Content Accessibility Guidelines

## M-Star TSP Supports the Entire Training Spectrum



**Traditional Face-to-Face Instruction**

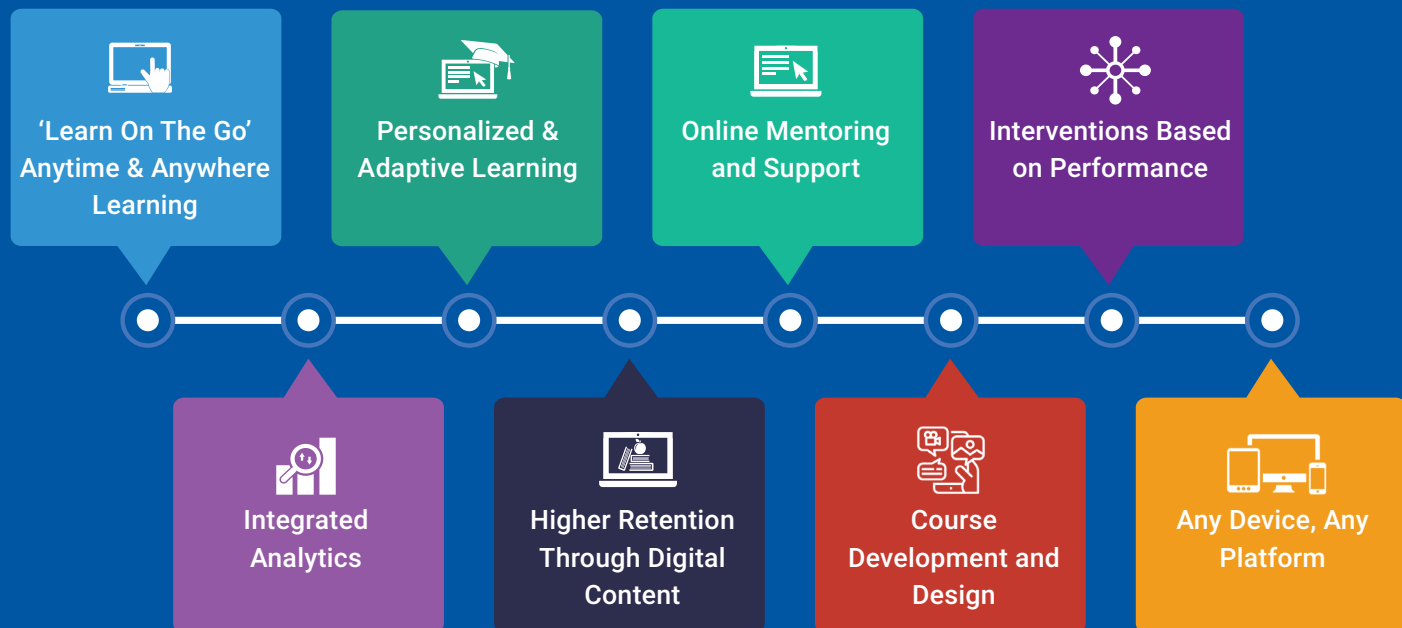


**All Models of Blended Learning**



**Virtual/ Online Instruction**

# Benefits of M-Star TSP



## ONE WORLD, ONE SOLUTION



### Hitachi MGRM Net Ltd.

A CMMI Level 5 and ISO 9001, 27000 and 21000 Company

📍 C- 6/5, Safdarjung Development Area, New Delhi - 110016, INDIA

☎ +91 11 2656 5758

✉ [contact@hitachimgrmnet.com](mailto:contact@hitachimgrmnet.com)

🌐 [www.hitachimgrmnet.com](http://www.hitachimgrmnet.com)



**GeM**  
Government  
e Marketplace



Copyright MGRM, All rights reserved. All named products and companies are trademarks of their respective organizations.